

Missa brevis

(ohne Credo) für Sopran- und Altstimmen mit Orgel
(without Credo) for Soprano and Alto Voices with Organ

Kyrie

Bertold Hummel
1925–2003
op. 18c

Sopran

Alt

Orgel

mf
Ky - ri - e e - lei - son.

p *mf*

6

mf *f*

Ky - ri - e e - lei - son. Ky - ri - e e - lei - son, e - le - - - - i - son.

f

Ky - ri - e e - lei - son. Ky - ri - e e - lei - son, e - le - - - i - son.

f

Ped.

12

mf

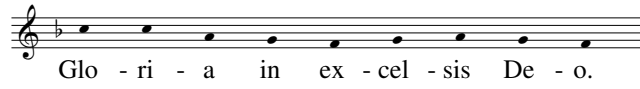
Chri - ste e - lei - son. Chri - ste e -

mf

Chri - ste e -

p *mf*

Gloria



2 Schola *p*

Et in ter - ra pax ho - mi - ni - bus bo - nae vo - lun - ta - - - tis.

This system contains the first vocal entry for the Schola. It features a vocal line starting with a piano (*p*) dynamic, followed by two empty vocal staves. The piano accompaniment is in the lower register, also marked *p*, and includes a pedal point in the bass line.

10 *mf*

Lau - - da - mus te. Be - ne - di - ci - mus te. Ad - o - ra - mus

Lau - - da - mus te. Be - ne - di - ci - mus te. Ad - o - ra - mus

This system contains the second vocal entry, marked *mf*. It features two vocal staves with lyrics and a piano accompaniment. The piano part includes a 'Ped.' (pedal) marking and a steady bass line.

18 Schola *p*

Gra - ti - as a - gi - mus ti - - - bi

te. Glo - ri - fi - ca - - - - mus te.

te. Glo - ri - fi - ca - - - - mus te.

This system contains the third vocal entry, marked *p*. It features two vocal staves with lyrics and a piano accompaniment. The piano part includes a *f* (forte) dynamic marking and a *p* (piano) dynamic marking, with a prominent bass line.

Sanctus

Musical score for Sanctus, featuring vocal lines and piano accompaniment. The score is in 3/4 time and consists of three systems.

System 1 (Measures 1-8):

- Vocal 1:** *mf* San - - - - - ctus, _____
- Vocal 2:** *mf* San - - - - - ctus, _____ San - - - - - ctus, _____
- Piano:** *p* Accompaniment with a steady bass line and moving upper parts.

System 2 (Measures 9-18):

- Vocal 1:** *f* San - - - - - ctus Do - mi - nus,
- Vocal 2:** *f* San - - - - - ctus _____ Do - mi - nus,
- Piano:** *f* Accompaniment with a *Ped.* (pedal) marking at the end of the system.

System 3 (Measures 19-28):

- Vocal 1:** De - - us Sa - - ba - - oth. _____
- Vocal 2:** *mf* De - - us Sa - - ba - - oth. _____ Ple-ni sunt cae-li et ter - - ra,
- Piano:** *mf* Accompaniment with a *mf* marking at the end of the system.

Agnus Dei

p A - - - - - gnus De - - - i, *mf* qui tol-lis pec-ca-ta mun - -
p A - - - - - gnus De - - - i, *mf* qui tol-lis pec-
p

8

f - di: mi - - - se - - - re - - - re no - - - bis.
f - ca - ta mun - di: mi - se - re - - - re no - - - bis.
f

16'

15

p A - - - - - gnus De - - - i, *mf* qui tol-lis pec-
p A - - - - - gnus De - - - i, *mf* qui tol-lis pec-ca-ta mun - -
p

2'